

# ENVICONT C400D

MOBILE OR STATIONARY FULLY AUTOMATIC COMPOSTING UNIT  
WITH USING DYNAMIC PROCEDURE

# ENVICONT

The mobile and stationary composting unit EnviCont C400D supports all those costumers to achieve flexible, fast and cost effective composting of all suitable materials.

The unit is suitable for the composting of bio-waste, green-cut, grass, straw, animal bedding, kitchen waste etc.

Composting in the EnviCont C400D is actuated via dynamic processing. The composting process in the EnviCont C400D is completely automatically controlled.

Through the process of hygienically treating, homogenising, composting and stabilising the chosen material, a premium quality an product is realised in just 6 – 12 days ( depending on the raw material used ).

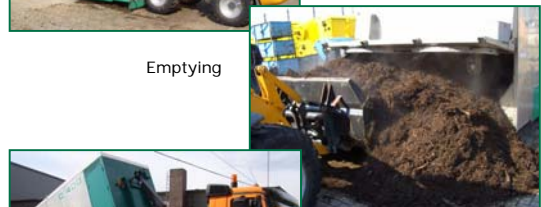
The workable amount of material handled, are in region of 400 – 450 t per annum. For larger quantities, the unit is superbly flexible, and easily adjustable to your chosen scale of operation.

Due the installation of two-stage filtering systems and odours are completely eradicated. Run-off is collected in a separate sump tank. The unit is designed as a ´plug and play´ apparatus, and is easily moved around by any suitable vehicle fitted with a standard tow-hitch. For immediate operation, only available connection to a compatible electrical supply is necessary, and if needed, also to a water supply.

As a result of intelligent and thoughtful construction, the EnviCont C400D is extremely ´user friendly´ and low maintenance equipment.



Feeding



Emptying



Transportation

## TECHNICAL DETAILS

length	6,00 m
width	2,50 m
height	2,50 m
plant surface entirely	15,00 m <sup>2</sup>
Operation weight	ca. 4,2 t
electrical supply	400 V / 32 A
electric power per day	approx. 15 kWh
plant surface entirely	15,00 m <sup>2</sup>
volume for one process	25,00 m <sup>3</sup>
process time ( depend on the material )	approx. 6 – 12 days
capacity per process ( depend on the material )	approx. 8 – 10 t, ca. 15 m <sup>3</sup>
capacity per month ( depend on the material )	approx. 25 – 35 t, ca. 45 m <sup>3</sup>
capacity per annum ( depend on the material )	approx. 400 – 450 t, approx. 600 m <sup>3</sup>
Features	<ul style="list-style-type: none"> <li>• completely closed system</li> <li>• fully automatic PLC controlled</li> <li>• biological air filter system</li> <li>• Run-off sump tank</li> <li>• easy filling end emptying</li> <li>• easy transport with hook lift truck</li> <li>• short processing time</li> </ul>

Note: all data subject to further technical development and in dependence of the real conditions and base numbers